

On May 21, 2021, Arne Johanson, Meadowlark Road landowner, Jim Lewis, Skyline Improvement and Service District Board Member, and Robb Sgroi, Land Resources Specialist, Teton Conservation District, discussed wildfire risk reduction recommendations, practices, and resources for the 3.3 miles of road in the Skyline Improvement and Service District. This included a verbal discussion of recommended vegetation management practices, as well as a physical inspection of several example areas and the recommended practices for those areas. The conversation also included discussion of resources available from Teton Conservation District's Wildfire Risk Reduction Program, that offers financial support for projects that manage vegetation in private road corridors.

Below are 1) an image of Teton Conservation District's recommendations for managing vegetation in road corridors, which utilizes the National Fire Protection Association standards as a basis, and 2) images of conditions documented during the site visit, and captions with recommended practices.

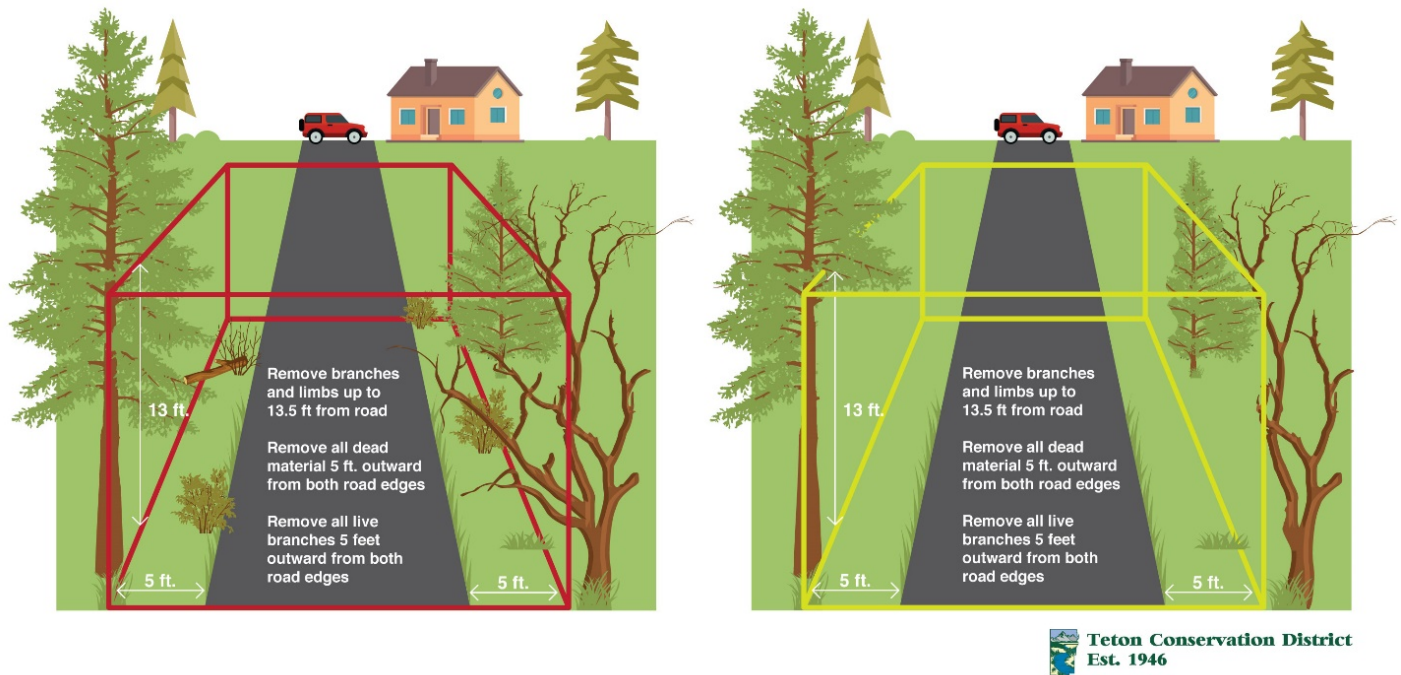


Figure 1. Vegetation standards recommended by Teton Conservation District, for road corridors (should read 6 feet, not 5 feet, for horizontal widths).



*Figure 2. Recommend pruning back limbs from the annotated conifer (and all comparable areas) that encroach into the road corridor.*



*Figure 3. Recommend pruning back limbs of this juniper.*



*Figure 4. Recommend remove dead trees from the road corridor, including (but not exclusive to) the outlined aspen.*



*Figure 5. Recommend pruning back limbs of conifers that encroach into the road corridor, such as the area outlined in above photo.*



Figure 6. Recommend pruning back conifer limbs encroaching in the road corridor, such as the outlined area in photo above.



*Figure 7. Recommend pruning back live and dead shrubs, in the area six feet out from the edge of the paved surface.*



*Figure 8. Recommend pruning back limbs encroaching in the road corridor, such as the limbs outlined in this willow.*





*Figure 9. Recommend raise pruning (removing all live and dead lower limbs) six feet above the ground surface, for this large conifer at the corner of the driveway and road.*



*Figure 10. Recommend raise pruning the lower limbs of the conifer in photo above.*